

PROJECT SHEET

# Exterior Restoration of Saint-Christophe Church

MIZOËN, FRANCE

## THE PROJECT

Perched on a rocky spur and visible from the bottom of the Romanche valley, the Saint-Christophe church in Mizoën (38), built in 1889, underwent extensive restoration work over several months.

Weathered and eroded façade elements were repaired using natural PROMPT cement. Mouldings, cornices, and decorative stones of this 19th-century building were carefully restored. To improve functionality, an emergency exit was added, seamlessly integrated into the neo-Romanesque façades thanks to the use of PROMPT cement.

The project, funded by the Écrins National Park, the Auvergne-Rhône-Alpes region, the Isère Department, and the association Coutumes et Traditions, holds significant heritage value. The church's construction reflects techniques that marked the evolution of modern architecture. Following restoration, the church has resumed its original religious function and now also serves as a venue for community events.



**Owner** \_\_\_\_\_

Commune of Mizoën

**Architect** \_\_\_\_\_

AF Trait d'Architecture

**Contractor** \_\_\_\_\_

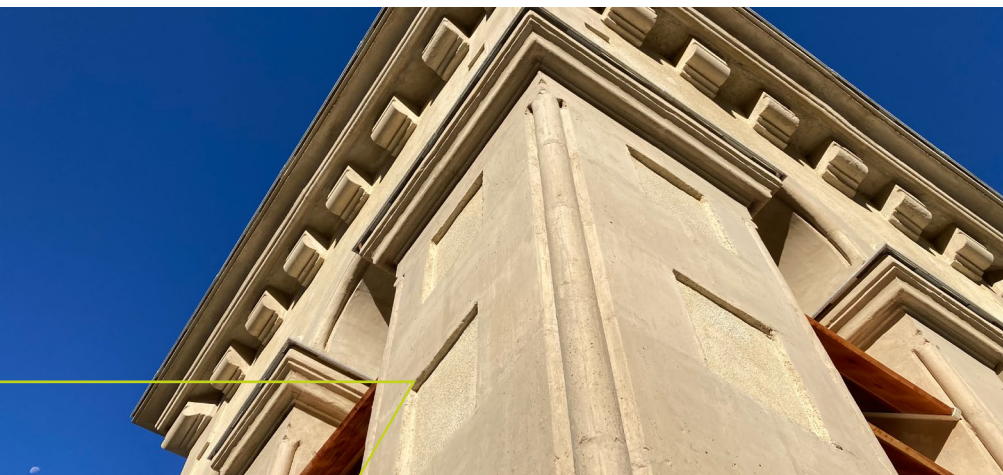
Comte

**Duration** \_\_\_\_\_

18 months

**Delivery date** \_\_\_\_\_

October 2022



## TECHNICAL APPROACH

### Casting artificial stones

- Concrete dosage: 550 kg/m<sup>3</sup> (35 L concrete mix + 25 kg CNP)
- Vibrate carefully to remove air bubbles
- Retard setting with citric acid (0.3–1% of CNP weight)

### Molding profiles

- Clean and humidify surface
- Install dowels and wires for anchoring. These anchors are required for sections exceeding 3–4 cm in thickness. Their placement will be determined according to the profile shape.

### Mortar dosage:

- Bonding layer: 1 part sand (0/4) + 1 part CNP
- Shaping layer: 1 part sand (0/4) + 1 part CNP
- Finishing layer: 1 part sand (0/1 or 0/2) + 1–1.5 parts CNP

### Repairing chips and cracks

- Clean and humidify surface
- Install dowels and wires for anchoring. These anchors are required for sections exceeding 3–4 cm in thickness. Their placement will be determined according to the profile shape.

### Mortar dosage:

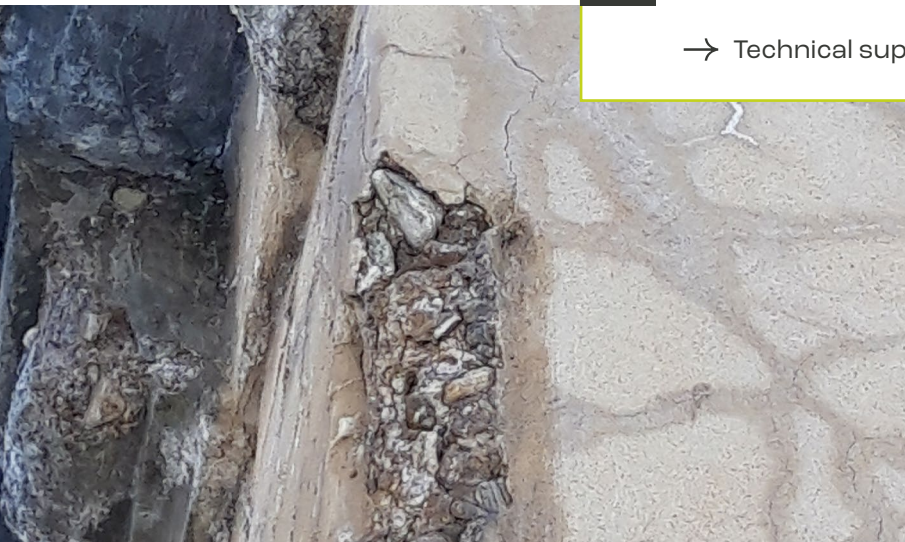
- Bonding layer: 1 part sand (0/4) + 1 part CNP
- Shaping layer: 1 part sand (0/4) + 1 part CNP
- Finishing layer: 1 part sand (0/1 or 0/2) + 1–1.5 parts CNP

TEMPO retarder optional



## VICAT ADVANTAGES

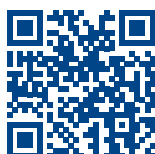
- Technical support



## PERFORMANCE REQUIREMENTS



Respect for original materials and aesthetics



For more information, contact Jean-Philippe Bruasse, Technical Trainer & Advisor PROMPT:

[jean-philippe.bruasse@vicat.fr](mailto:jean-philippe.bruasse@vicat.fr)  
[ciment-prompt-vicat.fr](http://ciment-prompt-vicat.fr)