

APPLICATION SHEET

Stone imitation

Restore cornices, window surrounds and quoins to enhance your façades. Design your landscapes with **basins, bridges, arcades and small walls** using a PROMPT natural cement render that perfectly imitates original stone.

The art of imitating local stone with PROMPT natural cement has existed for over 170 years.



+

IMPLEMENTATION

Equipment

- **For application:**
Dowels, straightedges or boards, level, mixing trough, trowel, pointing trowel, jointing iron, float, (optional) electric mixer
- **For finishing (depending on desired appearance):**
Float, trowel, sponge, rasp, brush...

Materials

- PROMPT natural cement (CNP)
- TEMPO (retarder)
- Rendering sand (0/2 mm), pigments and lime

Consumption

(per cm thickness per m²)

- **Very soft substrates:**
 - › Solution 1: 3.3 kg CNP + 2.7 kg NHL + approx. 12 L dry sand
 - › Solution 2: 1.5 kg CNP + 3.5 kg NHL + approx. 10 L dry sand
- **Soft substrates:**
4 kg CNP + approx. 8 L sand
- **Hard substrates:**
7 kg CNP + approx. 7 L sand

*1 l = 1 kg de CNP

ADVANTAGES OF PROMPT NATURAL CEMENT






- Natural, pastel colors compatible with both old and new structures
- Permeance of the render
- Fast installation
- Cost-effective and durable solution
- Enhances craftsmanship

CNP = PROMPT natural cement

IMPLEMENTATION

Dosage

Note: Pigments must not exceed 3% of binder weight.

	 PROMPT natural cement	 NHL 3.5	 Fine sand	 Tempo	 Water
Very soft substrates* - Solution 1 or - Solution 2	2 L or 1 L	2 L or 1 L	7 to 10 L	0.5 to 1 cap per liter of cement	0.3 to 0.5 L depending on sand moisture
Supports tendres	1 L	-	2 L	0.5 to 1 cap per liter of cement	0.3 to 0.5 L depending on sand moisture
Supports durs	1 L	-	1 L	0.5 to 1 cap per liter of cement	0.3 to 0.5 L depending on sand moisture

*(molasse, tuffeau, chalk, weathered schist, etc.)

Setting time of PROMPT natural cement

Mortar temperature	Substrate	10° C	20° C	30° C
Setting time with TEMPO*	Soft	80 min	40 min	20 min
Setting time with TEMPO*	Hard	50 min	25 min	15 min
Setting time without TEMPO*	Hard	4 min	2 min	1 min

*Indicative values

PRELIMINARY RECOMMENDATIONS

Shape selection

Refer to nearby buildings so that the imitated stones blend harmoniously with the surroundings.

Color selection

The render naturally develops an ochre color after a few days.

Adjust color by:

- › Selecting appropriate sand
- › Adding pigments (preferably natural): yellow/red ochre, umber, sienna, etc.
- › Adding lime lightens the mix
- › Final limewash is generally unnecessary unless matching existing stone

Texture selection

Depends on the desired finish to reproduce original stone: smooth, scraped, picked, sponged, brushed, tooled, acid-etched (with precautions), bush-hammered (after 24 hours)

Substrate preparation

- Quoins or coursed stonework: mark out the layout (set out the bonding pattern). Then install straightedges. For wide joints, temporarily fix battens onto the substrate with the required width and thickness. It is also possible to create the edges directly using PROMPT natural cement mortar
- Straight stonework : idem
- “Old-style” irregular stonework: pre-draw all desired outlines directly on the substrate. Assess the overall visual result. Then install reference markers
- Identify hollow areas: remove unsound parts. Clean the substrate thoroughly. If necessary, apply a PROMPT natural cement bonding coat immediately before applying the render. For very soft stones such as molasse, consult technical support before application
- Smooth substrates: roughen (mechanically key) the surface or apply a suitable bonding primer adapted to the substrate. Thoroughly wet the substrate. The substrate must be damp but not dripping (no free water / no run-off)

Mortar preparation

- Dry-mix cement, sand, TEMPO (+ pigments and/or lime) and homogenize
- Add water and mix until a plastic consistency mortar is obtained

Installation

- Prefer working stone by stone
- Thickness: approx. 1.5 cm on new substrates
- Apply with a trowel or float (or a spray pot if required) to a sufficient thickness to achieve the desired finish
- While mortar is fresh, mark joints using a tool
- Compact the render, especially at edges, for proper adhesion
- Check overall appearance, then: finish joints (iron or cut), optionally hollow joints and refill with a different-colored mortar

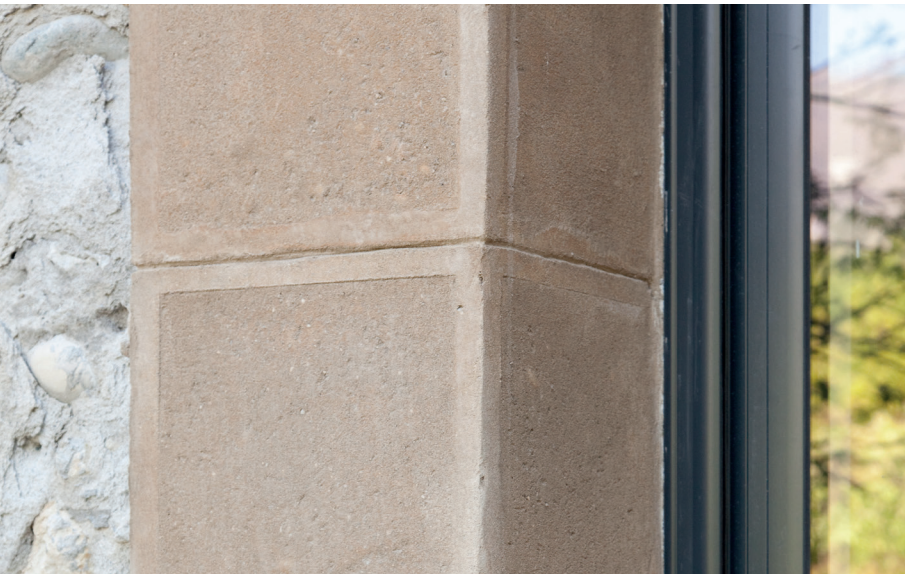


IMPLEMENTATION RECOMMENDATIONS

- Do not remix after setting has started
- Avoid excess water
- In cold weather: minimum application temperature 2°C, on non-frozen substrates with no frost risk during the day
- In hot weather: avoid mixing above 30°C

Finishing stage

- Surface treatment depending on desired grain:
 - › Natural stone effect: scratch entire surface evenly
 - › Cut stone effect: leave a 1–2 cm margin at edges and smooth it



DO NOT FORGET PPE

Wear appropriate protective equipment. Contact between skin and cement paste, concrete or fresh mortar may cause: irritation, allergic reactions, burns.

