

**PROJECT SHEET**

# Restoration of the Russian Orthodox Church of Christ the Savior

SANREMO, ITALY

## THE PROJECT

The tender concerned the conservative restoration of façades and the domes (central and lateral) of the Russian Orthodox Church of Christ the Savior, Saint Catherine Martyr, and Saint Seraphim of Sarov.



**Owner**

Parish of Christ the Savior

**Architect**

Laura Re

**Contractor**

Formento Filippo Carlo S.r.l

**Duration**

12 months

**Delivery date**

August 2019



## TECHNICAL APPROACH

### Current state:

The coverings of the five bulbous domes (or lanterns), made of concrete and clad in ceramic, were polychrome on the smaller domes and gilded on the main one. They showed advanced signs of deterioration. Many facade elements were also affected by detachment risks and imminent collapse due to water infiltration, which had caused oxidation of the iron reinforcements and cracking of the decorative concrete in multiple areas.

### Restoration:

The restorers mapped the surfaces to be treated and carefully cataloged detached fragments or those at immediate risk of falling,

particularly decorative concrete elements near rusted iron bars, now exposed to the air.

The first operation involved treating the iron reinforcements with a passivating agent, followed by restoration and plastic integration of the missing parts, with simultaneous bonding and hinging of the reconstructed portions.

Mortar tests for joints and reconstructions were conducted using various proportions of binder and aggregates with different particle sizes. In collaboration with the Soprintendenza officials and the project management, the restorers selected a mortar sample that matched the original in composition, granulometry, and color.

The chosen mortar consisted of :

- 20% natural cement,
- 20% fat lime,
- 60% selected aggregates.

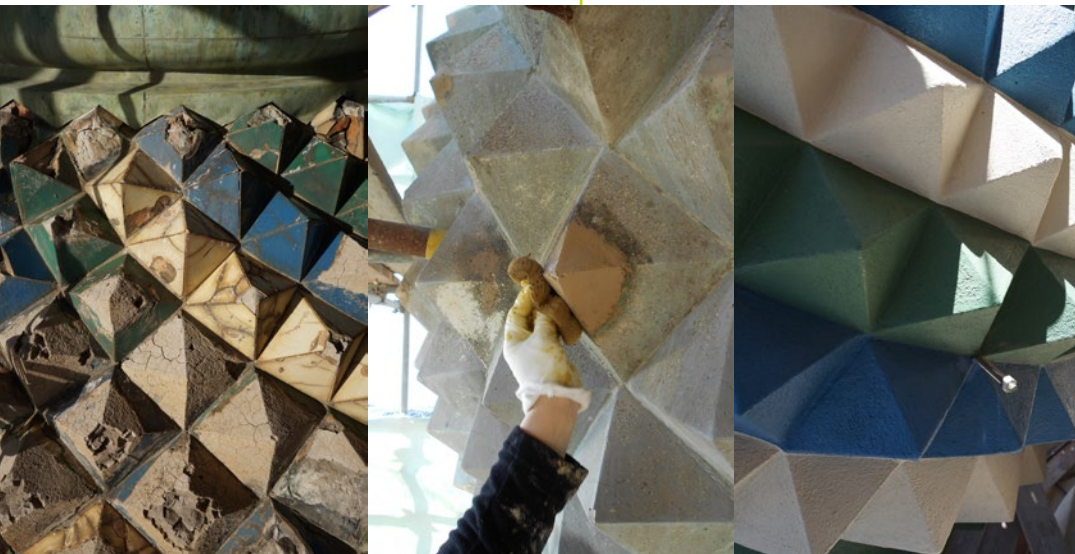
Pyramid-shaped elements integrated with the natural cement-based Prompt mortar were painted to mimic the original blue, green, and white faience.

Thanks to the pre-adjusted color of the selected mortar, reconstructions and integrations of the concrete aggregate parts required only a single patination.



### VICAT ADVANTAGES

- The setting time can be adjusted according to the work required: this feature allows for easier reconstruction of moldings.



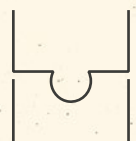
For more information, contact Jean-Philippe Bruasse, Technical Trainer & Advisor PROMPT:

[jean-philippe.bruasse@vicat.fr](mailto:jean-philippe.bruasse@vicat.fr)  
[ciment-prompt-vicat.fr](http://ciment-prompt-vicat.fr)

### PERFORMANCE REQUIREMENTS



**Compatibility  
with lime**



**High compatibility  
with original  
mortars**